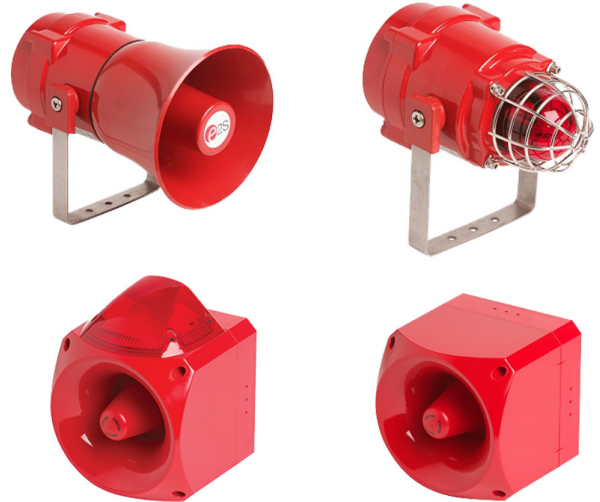


Product Datasheet

Alarms

Audible/visual alarms provide an additional level of safety for your staff. In a busy, noisy shop floor environment for example, the activation of an emergency safety shower can easily go unnoticed.

By fitting activation alarms to your showers you can be certain all staff in the area will be alerted to the use of the shower or eyebath and can offer assistance to the casualty and clean any chemical spill to prevent further accidents.



Specifications - Visual Alarm

MATERIALS OF CONSTRUCTION	
HOUSING	Marine grade copper free LM6 Aluminium
HOUSING MATERIAL FINISH	Phosphated & powder coated finish - anti-corrosion
SERVICES	
FLASH RATE	1Hz / 60 fpm
VOLTAGE (DC)	24vdc
CERTIFICATION	II 2G Ex d IIC T4
DIMENSIONS & WEIGHT	
WEIGHT	2 .45kg / 5.39lbs

Specifications - Audible Alarm

MATERIALS OF CONSTRUCTION	
HOUSING	Marine grade copper free LM6 Aluminium
HOUSING MATERIAL FINISH	Phosphated & powder coated finish - anti-corrosion
SERVICES	
VOLUME	Max. 110dB(A) / Min. 72 dB(A)
VOLTAGE	24vdc
CERTIFICATION	II 2 G Ex d IIB T4
DIMENSIONS & WEIGHT	
WEIGHT	2 .45kg / 5.39lbs

Specifications - Audible/Visual Alarm

MATERIALS OF CONSTRUCTION	
HOUSING	PC / ABS
SERVICES	
VOLUME	110dB(A)
FLASH RATE	1Hz / 60 fpm
VOLTAGE	230Vac
IP RATING	IP66
DIMENSIONS & WEIGHT	
WEIGHT	0.8kg / 1.7lbs